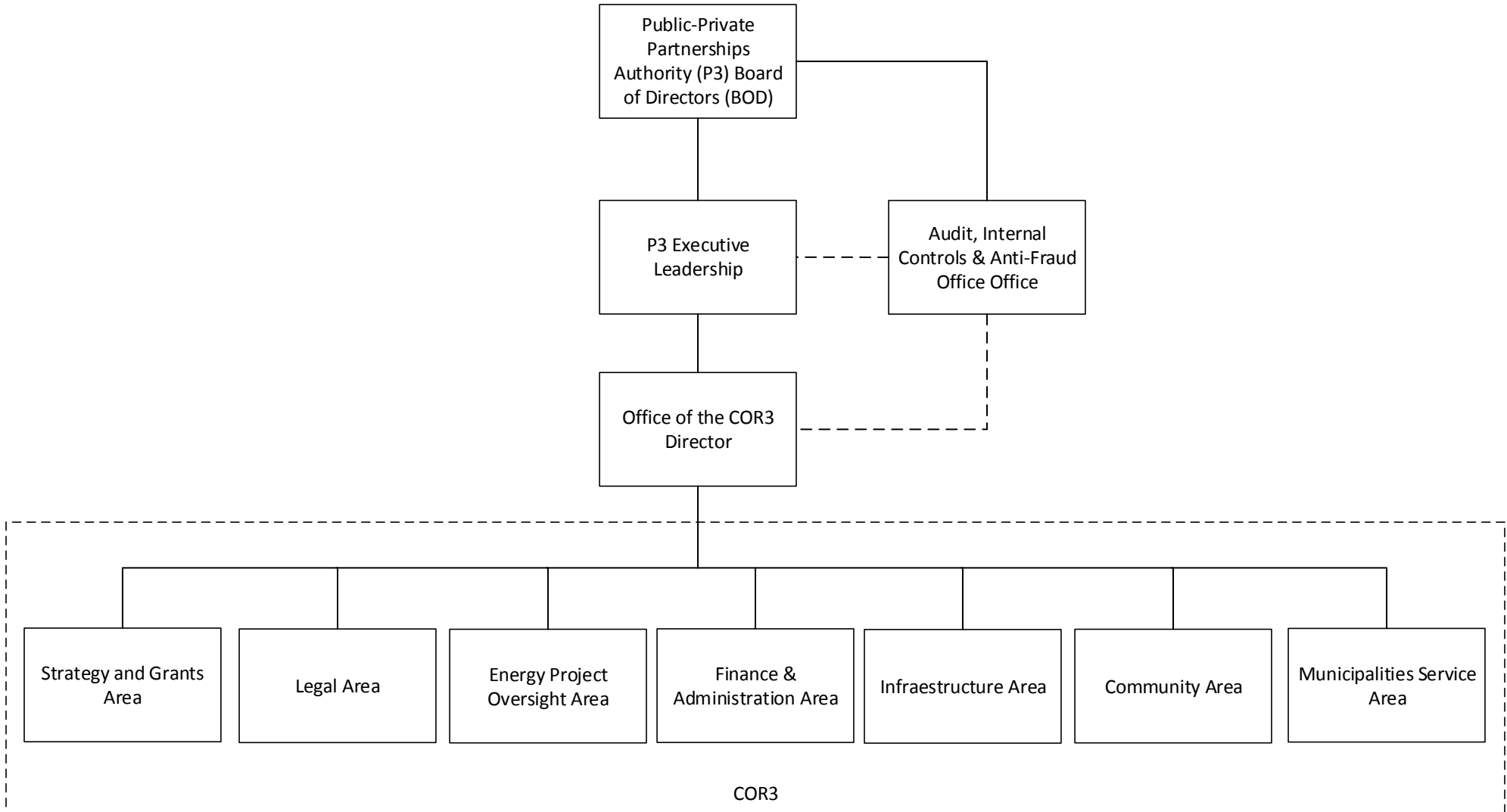


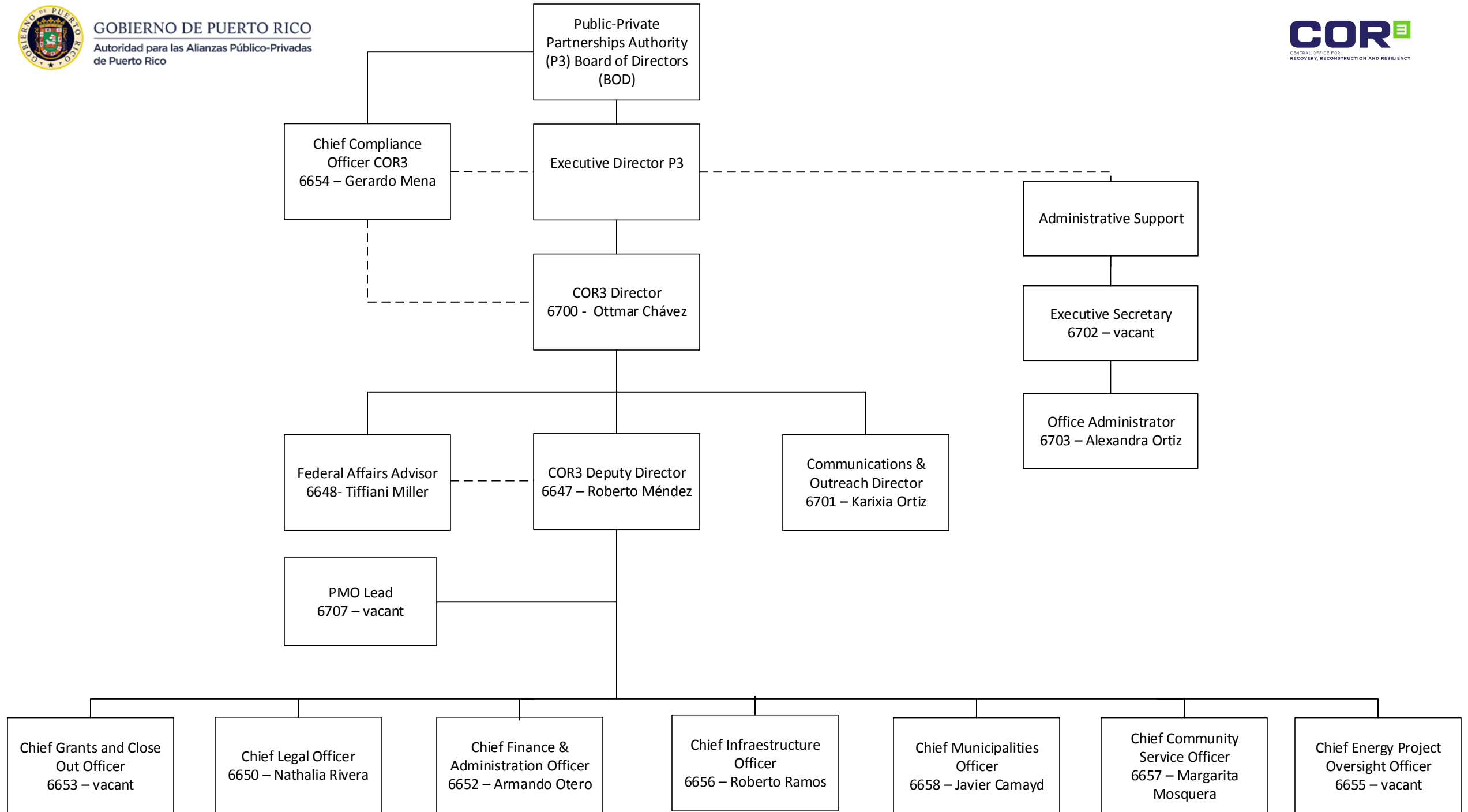


### OVERALL STRUCTURE



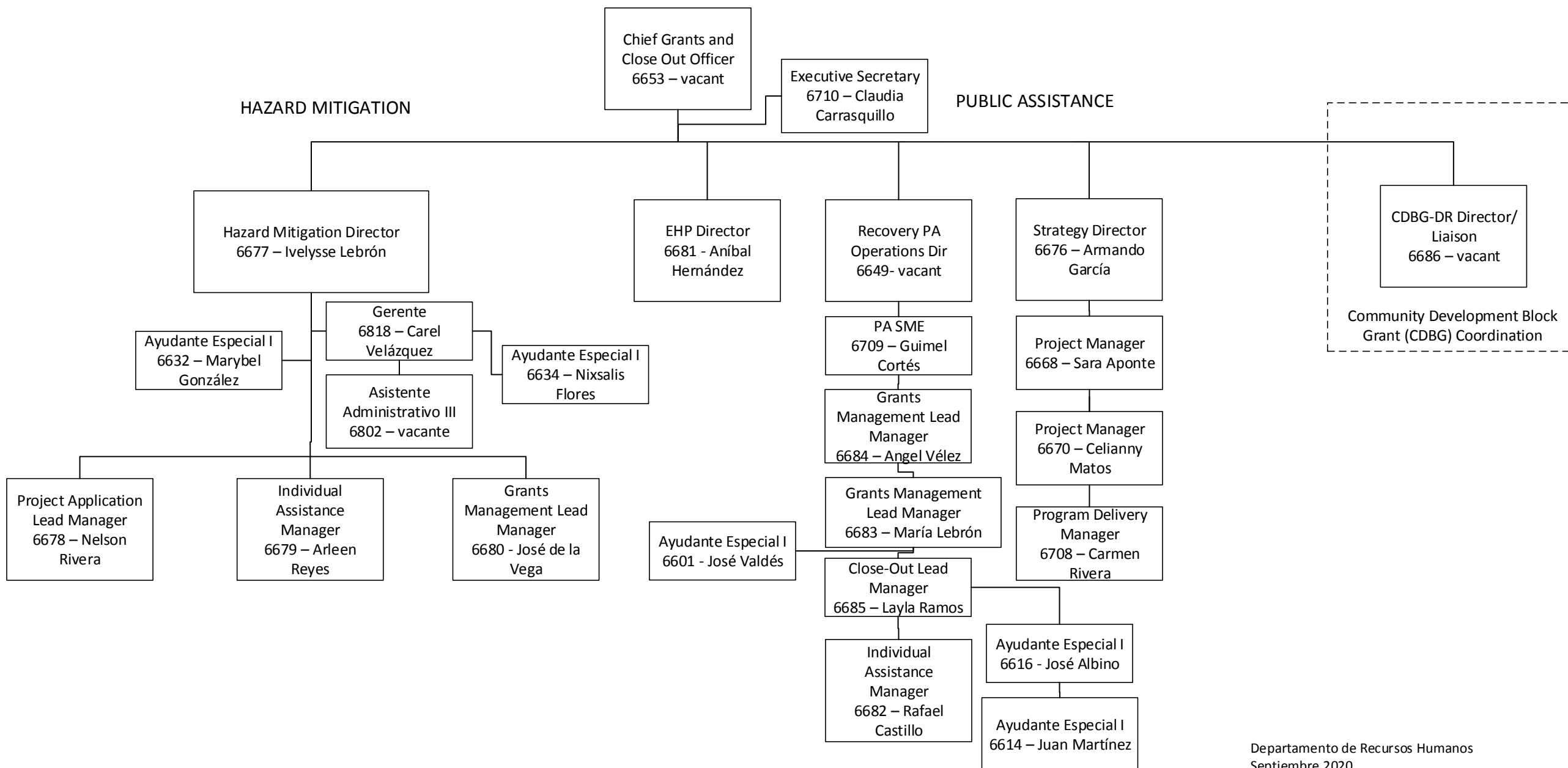


**LEADERSHIP ORGANIZATIONAL STRUCTURE**



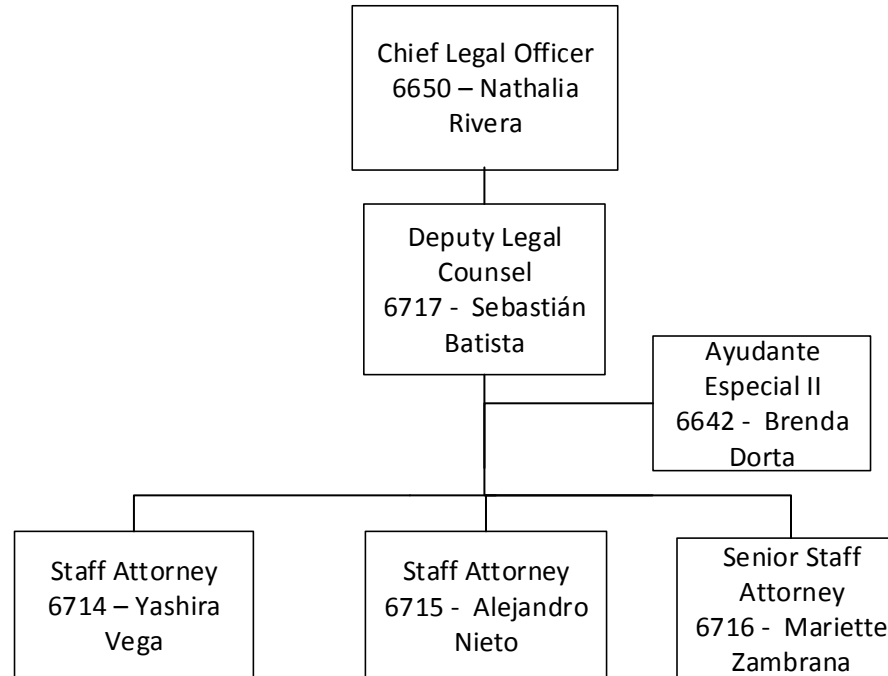


# STRATEGY AND GRANTS ORGANIZATIONAL STRUCTURE



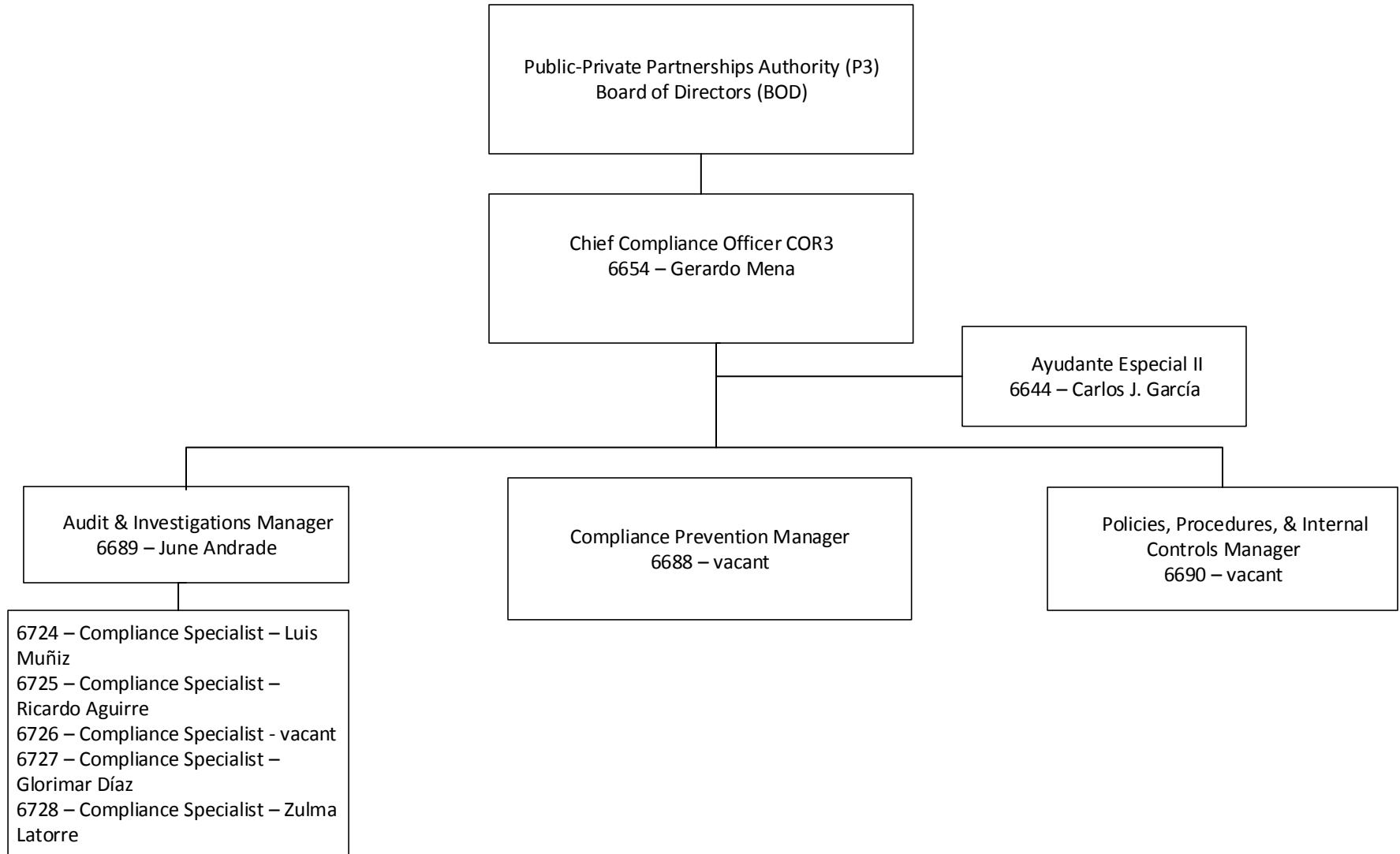


# LEGAL ORGANIZATIONAL STRUCTURE



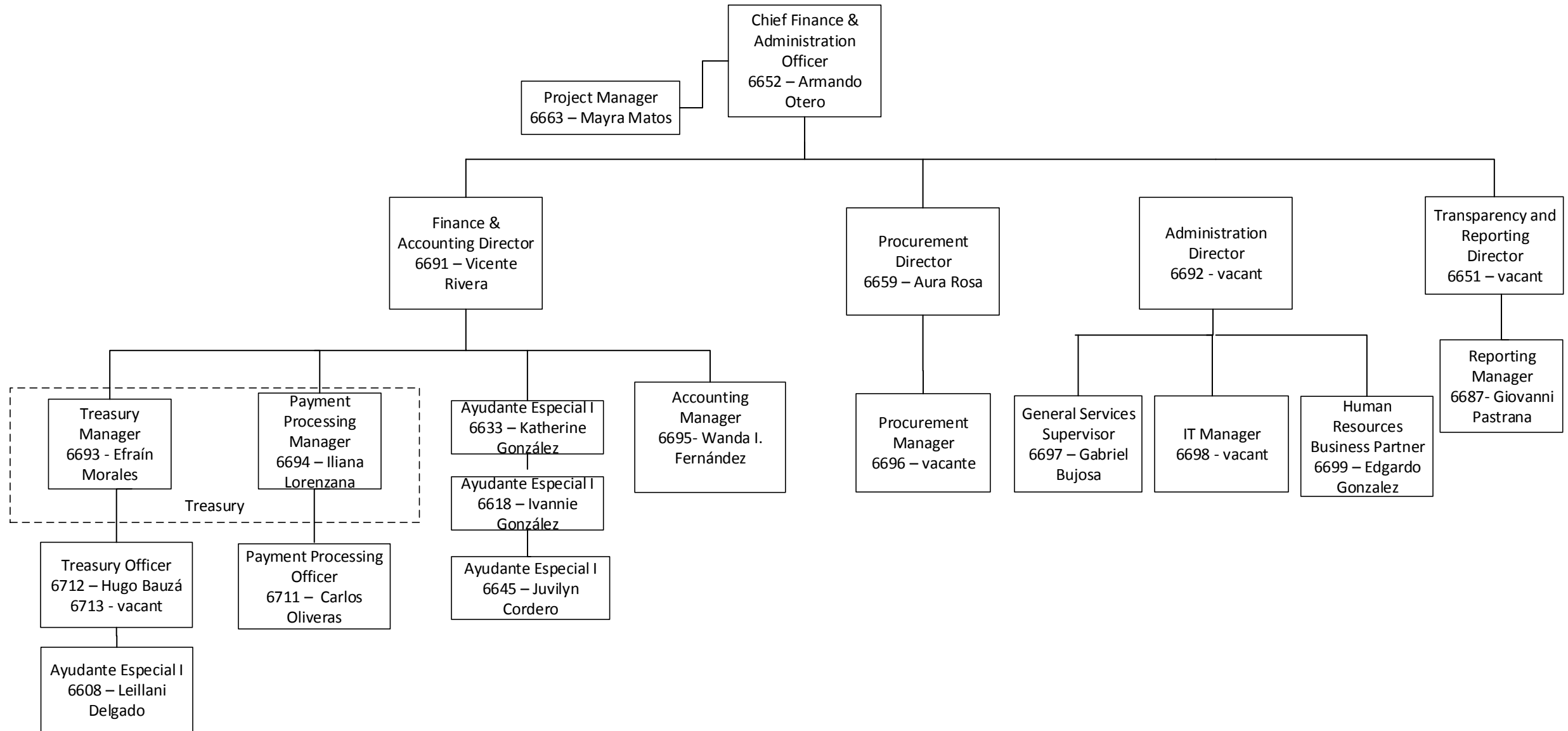


# AUDIT, INTERNAL CONTROLS, & ANTI-FRAUD ORGANIZATIONAL STRUCTURE



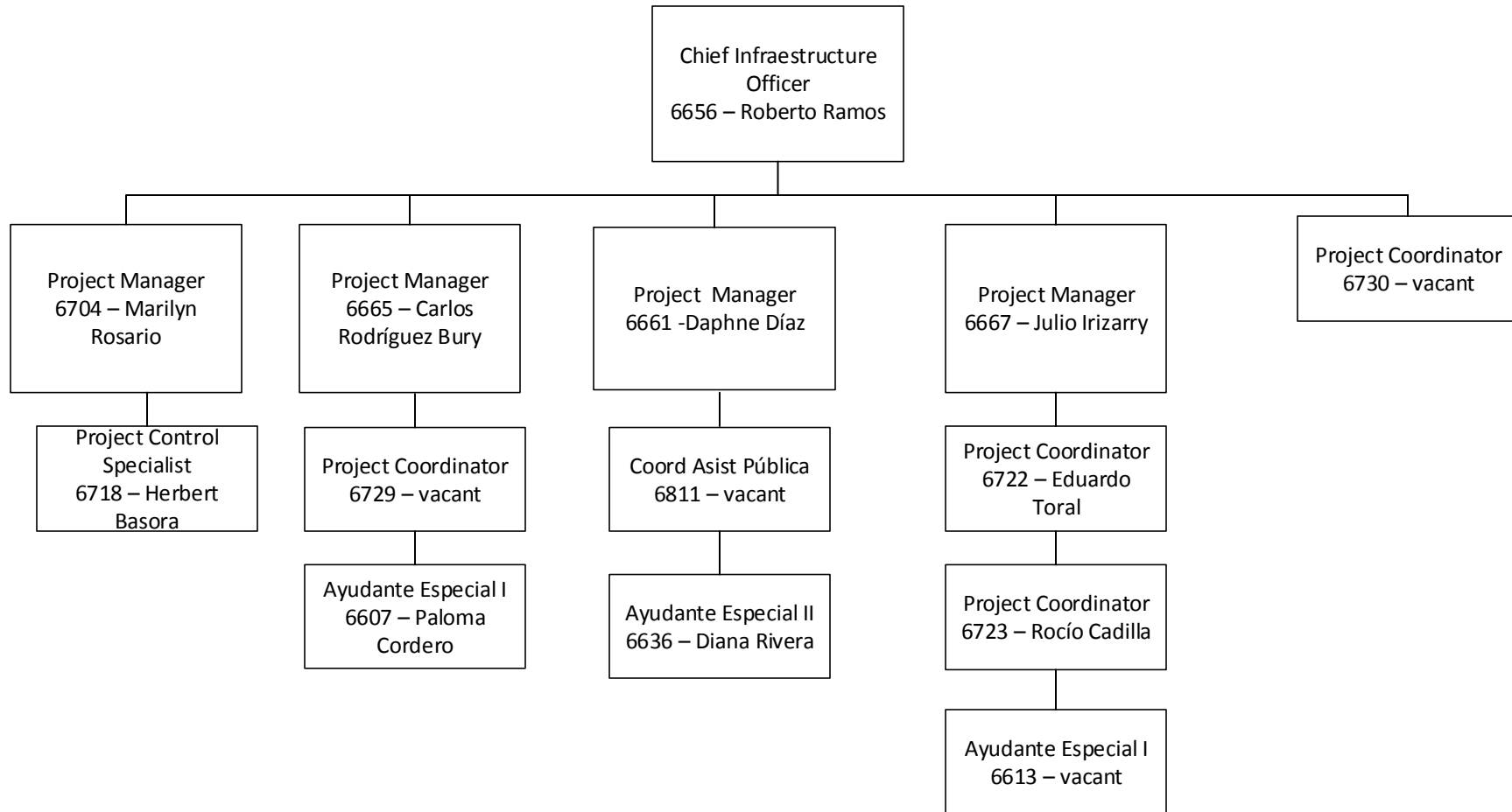


# FINANCE & ADMINISTRATION ORGANIZATIONAL STRUCTURE



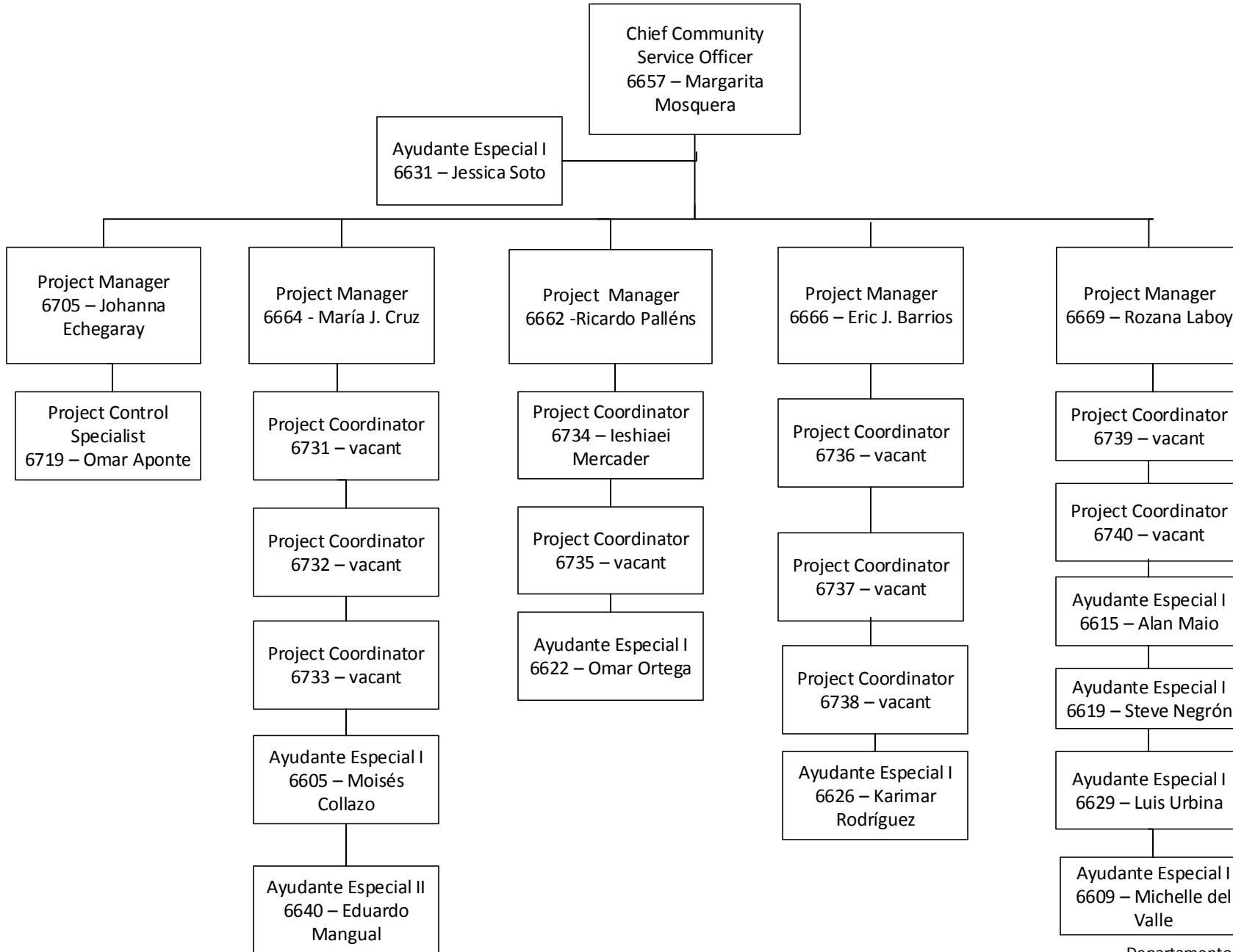


# INFRAESTRUCTURE ORGANIZATIONAL STRUCTURE





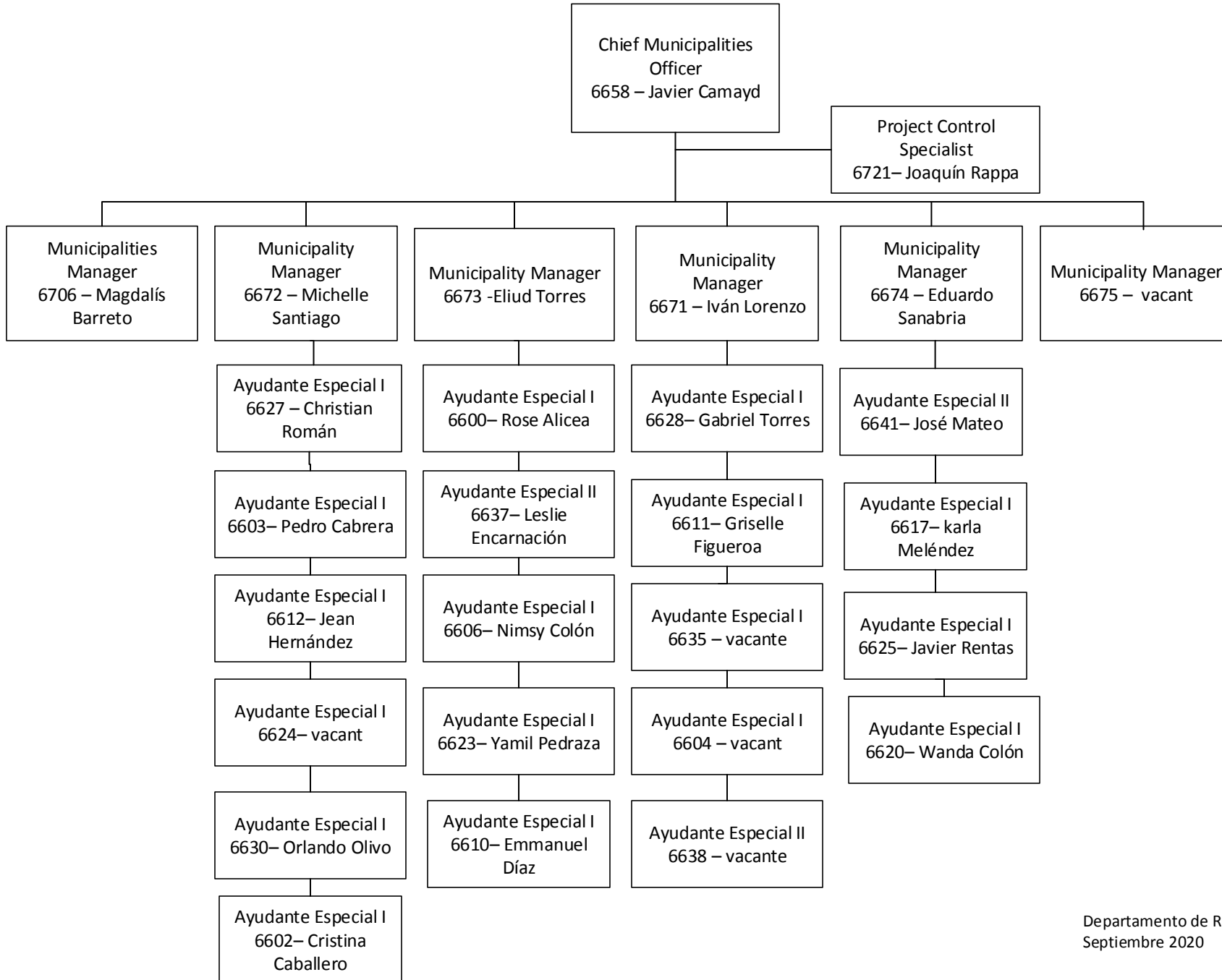
# COMMUNITY SERVICE ORGANIZATIONAL STRUCTURE







# MUNICIPALITIES ORGANIZATIONAL STRUCTURE





# ENERGY PROJECT OVERSIGHT ORGANIZATIONAL STRUCTURE

